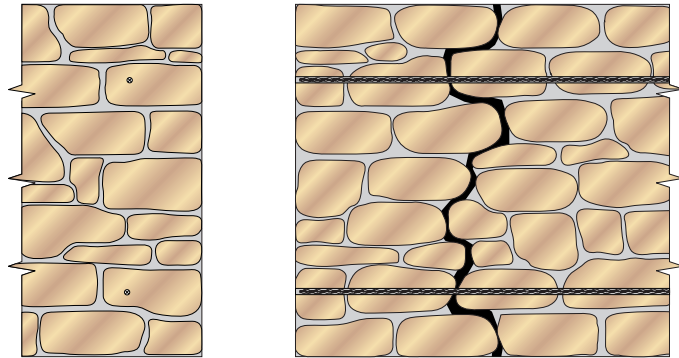


Repair of a Crack Near a Corner in a Stone Wall using CemTies

Method Statement

1. Mark positions for holes on the outer face of the wall.
2. Drill a 16mm clearance hole through the outer wall and to the required depth.
3. Clean out ALL dust from the hole and thoroughly flush with water. Where the substrate is very porous or flushing with water is inappropriate, use Helifix WB Primer. Ensure the hole is damp or primed prior to commencing step 8.
4. Attach the required length of CemTie pinning nozzle to the gun.
5. Mix HeliBond cementitious grout using a power mixer and load into the Helifix Pointing Gun Kit HD.
6. Pump grout to fill the nozzle.
7. Wind the CemTie into the nozzle and ensure that it is fully covered in grout.
8. Insert the nozzle to the full depth of the drilled hole and pump the grout.
9. Make good all holes at the surface with matching mortar and make good the crack using an appropriate Helifix bonding agent depending on the width of the crack or leave ready for any decoration.



Recommended Tooling

For drilling: SDS rotary hammer drill 650/700w.

For mixing HeliBond: 3-jaw-chuck drill with mixing paddle.

For insertion of the CemTies: Helifix Pointing Gun Kit HD with pinning nozzle.

General Notes

If your application differs from this repair detail or you require specific advice on your particular project, call the Helifix Technical Sales Team on 020 8735 5222. Our Technical Department can provide you with a full support service including:

- Advice, assistance and recommendations on all structural repair matters
- Devising and preparing complete repair proposals for specific situations
- An insurance-backed warranty via our Approved Installers scheme

SPECIFICATION NOTES

The following criteria are to be used unless specified otherwise:

- A** CemTies are to be installed at a vertical spacing of 450mm.
- B** CemTies are to extend at least 500mm past the crack.
- C** Depth of hole to be CemTie length +25mm.
- D** Ensure the CemTies are installed into solid stone and not the mortar joints or loose rubble within the wall.
- E** If cracking occurs on both elevations consider using HeliBar crack stitching around the corner. If CemTies have to be used, they should be staggered between each elevation.
- F** In hot conditions ensure the masonry is well wetted or primed to prevent premature curing of the HeliBond due to rapid de-watering. Ideally additional wetting of the hole, or priming with Helifix WB primer, should be carried out just prior to inserting the CemTie.
- G** Do not use HeliBond when the air temperature is +4°C and falling or apply over ice. In all instances the hole must be thoroughly damp or primed prior to injection of the HeliBond grout.

The above specification notes are for general guidance only and Helifix reserves the right to amend details/notes as necessary.